

A Journey of Discovery



ONLY ONE

Shiiba



A Journey on Which the Flow of Time Is Altered





A Journey of Renewal by the Earth

A Journey of Unforgettable Encounters



A Journey to Learn the Life-Giving Nature of Food





A Journey of Discovery



There is a mysterious power to Shiiba.
It will make you a little more authentic than before.
Bring you a little closer to your natural state of being.
You might even find your mind is more open to the world around you.
Welcome to Shiiba: The only one in the world.

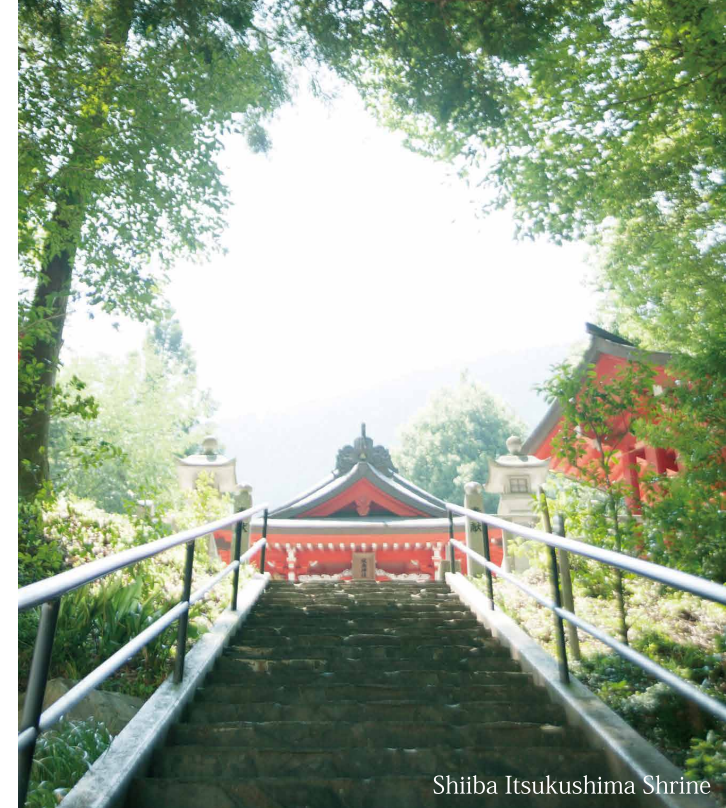
When you get this brochure, you may want to write your name and the date on this page, because someday, long after you have returned from your Shiiba trip, you will look back on this journey with fond memories.

A Journey on Which the Flow of Time Is Altered.

Tsurutomi Yashiki



This was the stage of an 800-year old love story between the *Heike* clan's Princess *Tsurutomi* and a *Genji* clan commander named *Nasu no Daihachiro*. It is speculated that the current building was erected around 300 years ago. Today, you can enter the mansion and get a glimpse into the past. When you sit in the corridor surrounded by old wooden doors, thick pillars, and dense beams, you will undoubtedly feel a nostalgic sense of calm.



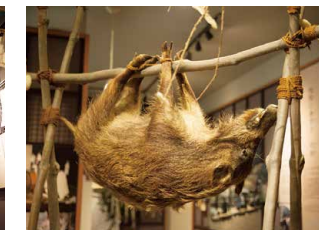
Shiiba Itsukushima Shrine



The Birthplace of Japanese Folklore Studies

Kunio Yanagita visited Shiiba for one week in July of 1908. He stayed at the house of the mayor at the time, which remains unchanged to this day. (Map E-6) By visiting various sites throughout Shiiba, he is said to have gathered important information which eventually led to the development of Japanese folklore science.

Later, the mayor sent a document to *Kunio Yanagita* describing Shiiba's ancient hunting ceremony. This became the basis for *Yanagita's* well-known story, "*Nochi no Kari Kotoba no Ki*."



Shiiba Folklore Museum

Admission Fee
Elementary and Junior High School Students ¥150 /
High School Students ¥200 /
Adults ¥300/
Hours 9 AM – 5 PM
Closed for New Year's holiday
Group Discount and Package Discount with admission to Tsurutomi Yashiki also available



Okubo Cypress



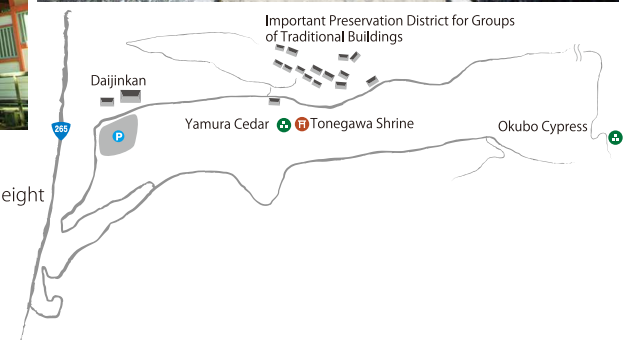
In *Tonegawa's* Important Preservation District for Groups of Traditional Buildings, the houses are built in a unique architectural style known as "Shiiba Style", while the surrounding structures such as stables, sheds, and even a stone wall match the design. This gives the area a sense of harmony while also preserving its historical landscape. By walking the narrow alleys between these buildings, you can get a sense of how long each building has been around. You may even experience time passing at a slower pace if you take some time to sit on the stone staircase and feel the wind sweeping down from the surrounding mountains.



↑ Yamura Cedar (Map F- 5)
estimated age of 800 years.
19 meters circumference, 54 meters height



← Okubo Cypress (Map G-5)
Biggest cypress tree in Japan,
estimated age of 800 years.
9.3 meters circumference,
32 meters height





Experience True Relaxation.

When entering Shiiba by car, you will be amazed by the mountains towering over the road and the depths of the surrounding valley. You will be fascinated by the houses built on the steep slopes of the mountainside. You will also want to take a walk around to get a glimpse of the local peoples' lives by seeing the fields, dam, turn mirrors, gardens, chickens, and cows which are all important parts of their daily lives. This might be the best way to enjoy Shiiba, as you allow time to slow to a pace only possible in the true countryside.



Visit Shiiba four times in a year to witness the beauty of each season.

Spring

Plum blossoms in the gardens, wild cherry blossoms everywhere, azaleas, rhododendron, rape blossoms, and astragalus. Come during the season which sees the mountains burst into life all at once with fresh green colors.



Summer

The entire village is wrapped in a deep green blanket, smoke from burning fields rises above the mountains, and anglers enjoy fishing while children swim in the cool clear waters. Come enjoy the cool and refreshing days of summer paradise in Shiiba.



Autumn

Golden rice terraces shimmering in the sun and buckwheat, corn, red bean, shiitake mushrooms, persimmons, and chestnuts all begging to be harvested while the surrounding mountains become stained with shades of red, yellow, and brown. Travel to Shiiba in autumn to experience the magic of ancient festivals and the richness of harvest season.



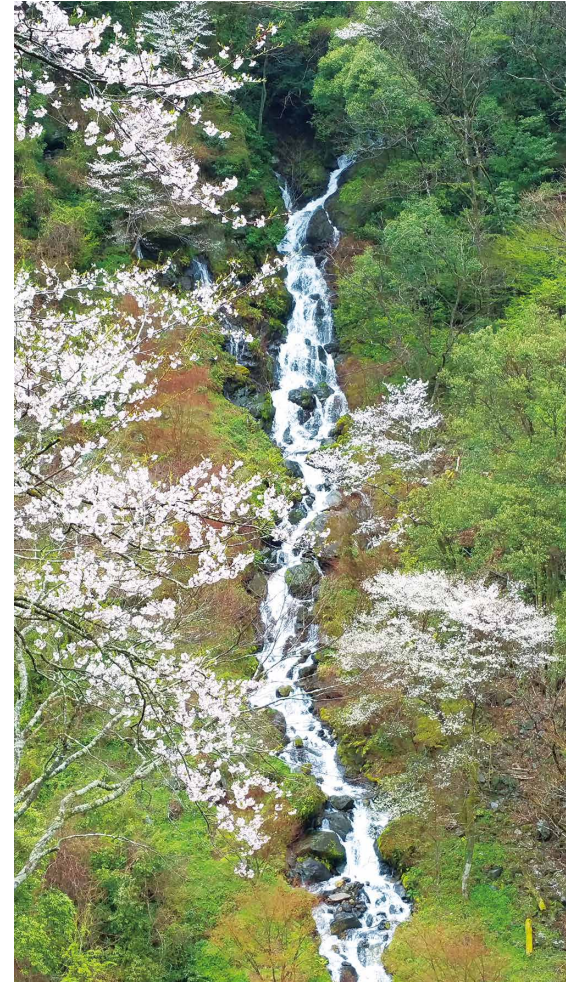
Winter

Warm your body on icy cold nights by eating a homemade dish known as *Nishime* and drinking *Shochu*, a popular liquor among locals while letting your mind slip away to the roll of drums during a *Kagura* performance. Visit crisp, clear Shiiba in winter to understand the true meaning of silence.



A Journey of Renewal by the Earth.

The Milky Way dominates the sky, far above the top of the several hundred-year old *Yamura* cedar tree. Shiiba's sky will make you feel a sense of oneness with the universe.



Shiramizu Waterfall (Map C-5)

Shiramizu is Japanese for white water. After losing the battle of *Dannoura*, it is said that the survivors of the *Heike* clan prepared rice for lunch upstream from this waterfall. When the water from the rice flowed into the waterfall, it reportedly turned pure white, thus coming to be known by this name. Shiiba is a place full of water with countless beautiful waterfalls.



Paeonia japonica
(Yamasyakuyaku)



Kirengesyouma



Rhododendron
(Syakunage)

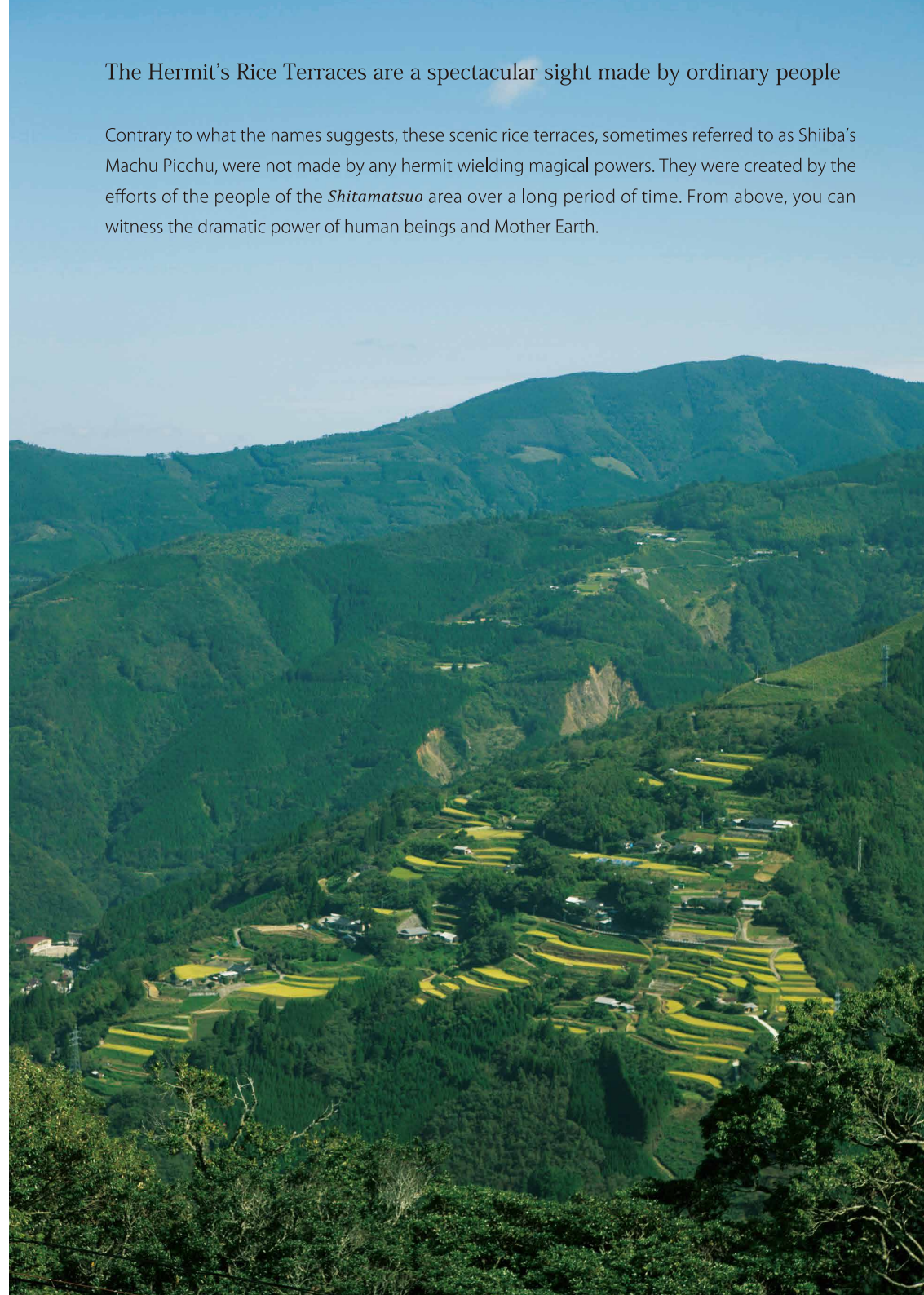
The mountains of Shiiba are part of the Central Kyushu Mountain Range, consisting of numerous mountains over 1600m. There, you can observe various kinds of mountain vegetation, rare plants, and beautiful wildflowers while trekking.



Oichou observatory (Map G-5) →
The observatory gives you a comprehensive view of the Hermit's Rice Terraces.

The Hermit's Rice Terraces are a spectacular sight made by ordinary people

Contrary to what the names suggests, these scenic rice terraces, sometimes referred to as Shiiba's Machu Picchu, were not made by any hermit wielding magical powers. They were created by the efforts of the people of the *Shitamatsuo* area over a long period of time. From above, you can witness the dramatic power of human beings and Mother Earth.





↑ : The Great Ginkgo Tree in Matsuo (Map G-5)

←← : Autumn Foliage
in the Nakatou Valley (Map F-4)

← : A fisherman in the clear waters of the
Mimikawa River

The sea of clouds as seen from Kuwanokibaru Pass (Map F-7)

Other spots from which the sea of clouds can be seen:

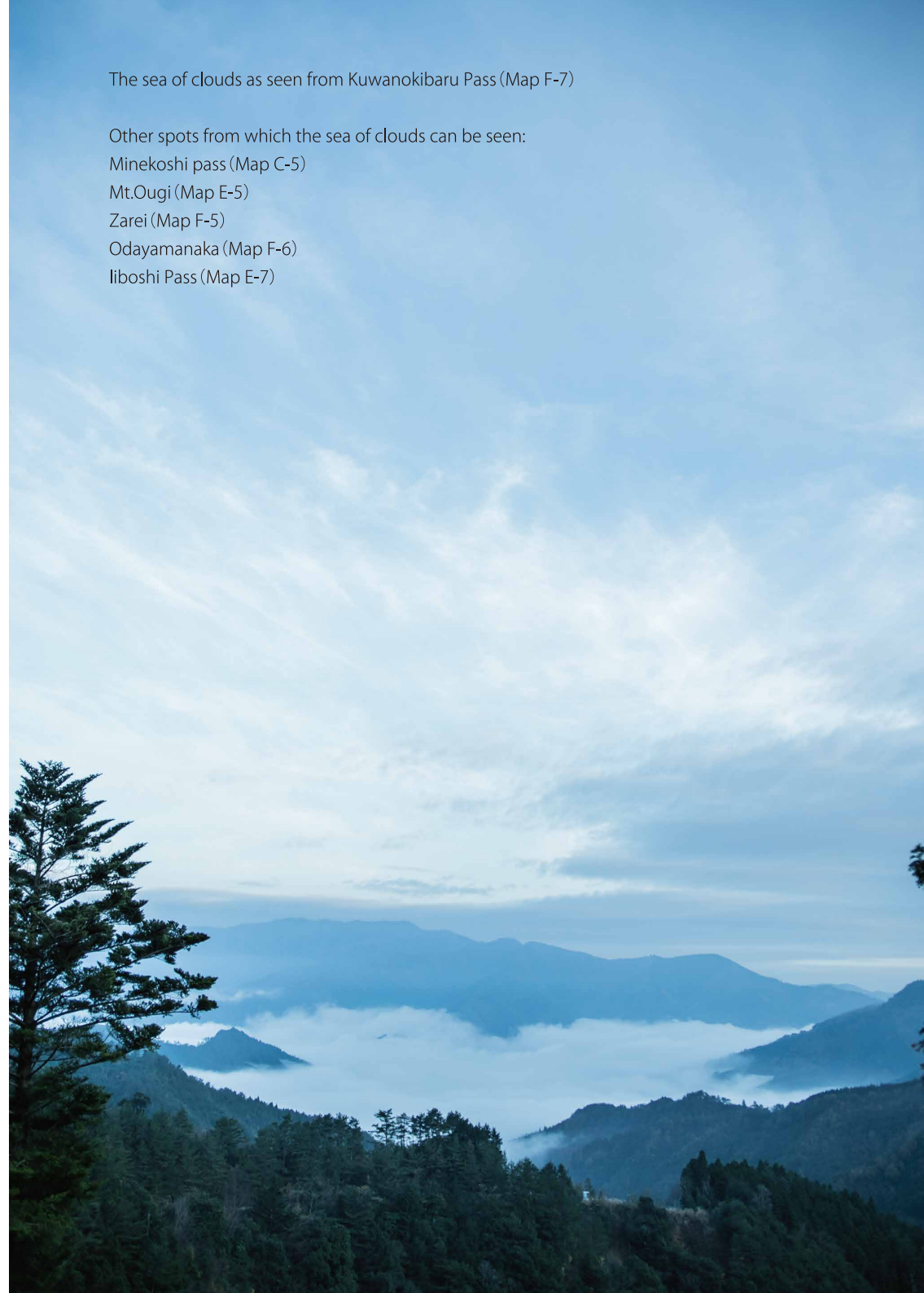
Minekoshi pass (Map C-5)

Mt.Ougi (Map E-5)

Zarei (Map F-5)

Odayamanaka (Map F-6)

Iiboshi Pass (Map E-7)



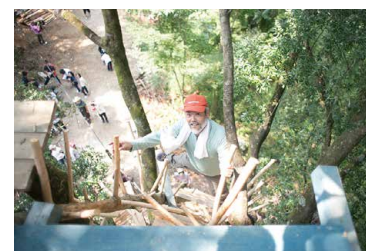


A Journey of Unforgettable Encounters

What will likely remain most deeply imbedded in your heart from your time in Shiiba is your interaction with the local people. We take great pride in welcoming travelers to our village. There may not be fancy facilities or bustling cityscapes, but the people here possess the wisdom to thrive in a natural environment. They find great joy in sharing this wisdom with travelers. We dream of a day when everyone in our village is also a guide, which is why we are implementing various Shiiba experience programs.



“Tom Sawyer’s Forest” Tree House Experience (Don’t look down!)



Kazuhide Omae and his friends have set up a space for visitors to experience various recreational activities unique to Shiiba in the forests and on the river of the *Omae* area. Here, in “Tom Sawyer’s Forest,” adults can feel as if they were kids again. (Map D-5)

A Journey of Unforgettable Encounters.

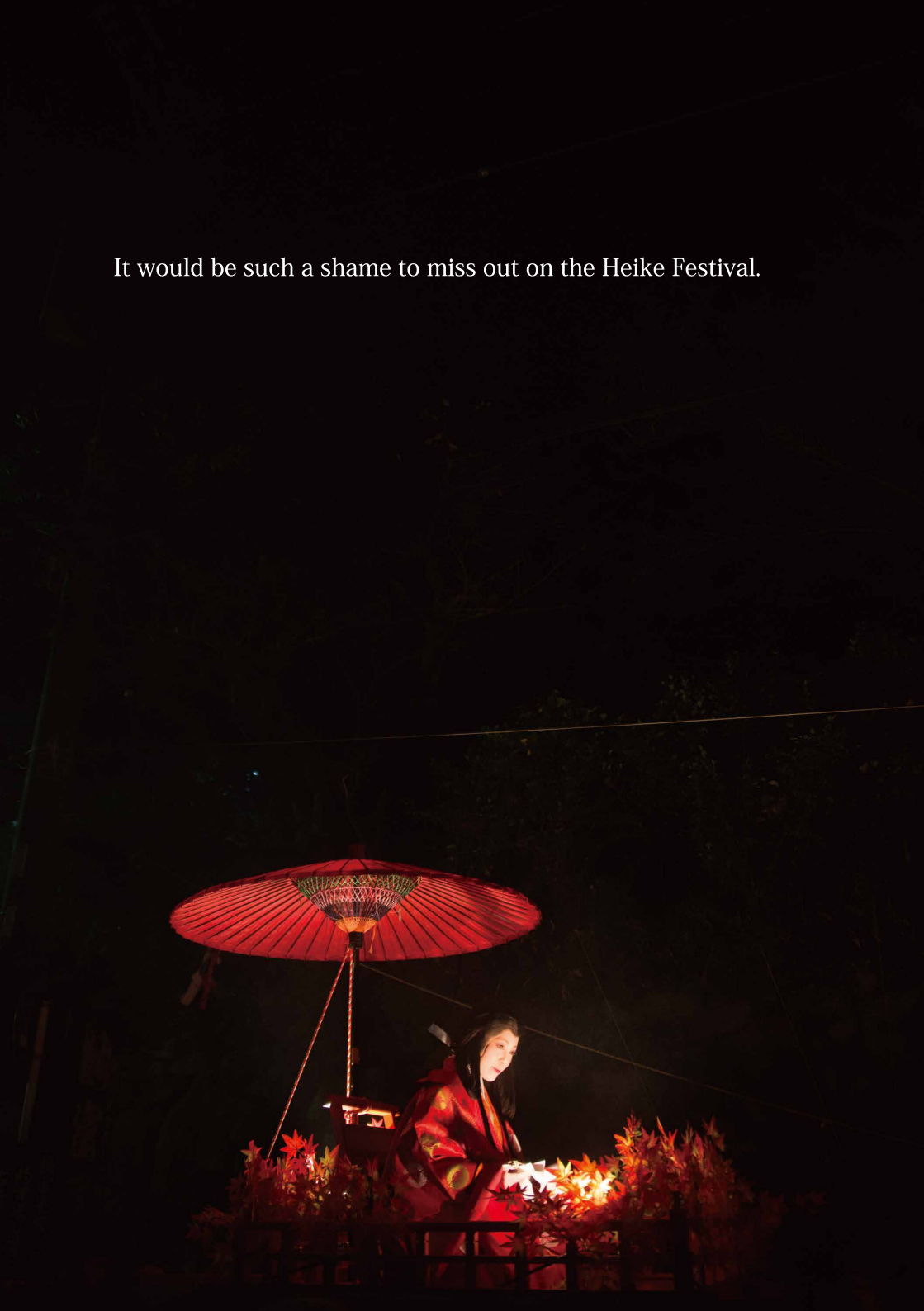
A number of experience tours have been planned.
For Inquiries: Shiiba Village Tourism Association TEL : 0982-67-3139



Forests Outdoors Wild Vegetables
Rivers Trekking Scenic Views Dam Cruising
Making Maple Syrup **Health Tourism** Pure Honey
Mushroom Picking Making Traditional Foods
Crafts History Farm Work **Cave Exploration** Herbs
Buckwheat **Slash-and-burn** Nature Staying in Old Houses



It would be such a shame to miss out on the Heike Festival.



A Journey of Unforgettable Encounters.



Every November, the “Shiiba Heike Festival” presents an opportunity for tourists and locals to interact. The villagers will welcome you with traditional performing arts, a *Yamatoemaki Samurai* procession, and loads of food and goods unique to Shiiba. We recommend coming on the first night of the festival to see the “*Hourakusai*,” which tells the story of how Princess *Tsurutomi* and General *Nasu no Daihachiro* met in Shiiba through a beautiful performance. Plan to stay the night in Shiiba to make the most of this experience. During these three days, it’s as if all of Shiiba comes together in one place with all the delicious foods and cheerful people. Extra parking and shuttle buses are available during the festival.





Welcome the Dawn with Enchanting *Kagura*



Kagura continues to be performed in 26 districts across Shiiba. Every year from mid November to December, it is performed through the depths of night at shrines and community centers by locals of all ages. What makes Shiiba's *Kagura* special is that the dancers and audience enjoy it together. On cold nights, you can warm up by a bonfire and eat *Nishime*, then welcome the dawn to the tune of bamboo flutes, beating drums, and chanting locals. Please check the schedule and locations of *Kagura* performances on the Tourism Association website.

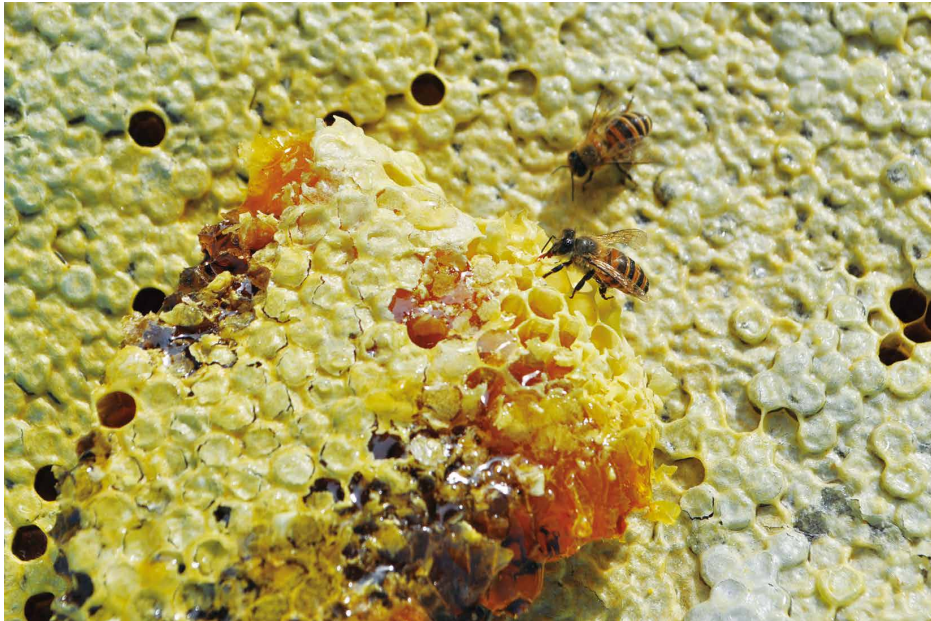




A Journey to Learn the Life-Giving Nature of Food



“Don’t take more than nature gives” and the Globally Important Agricultural Heritage System



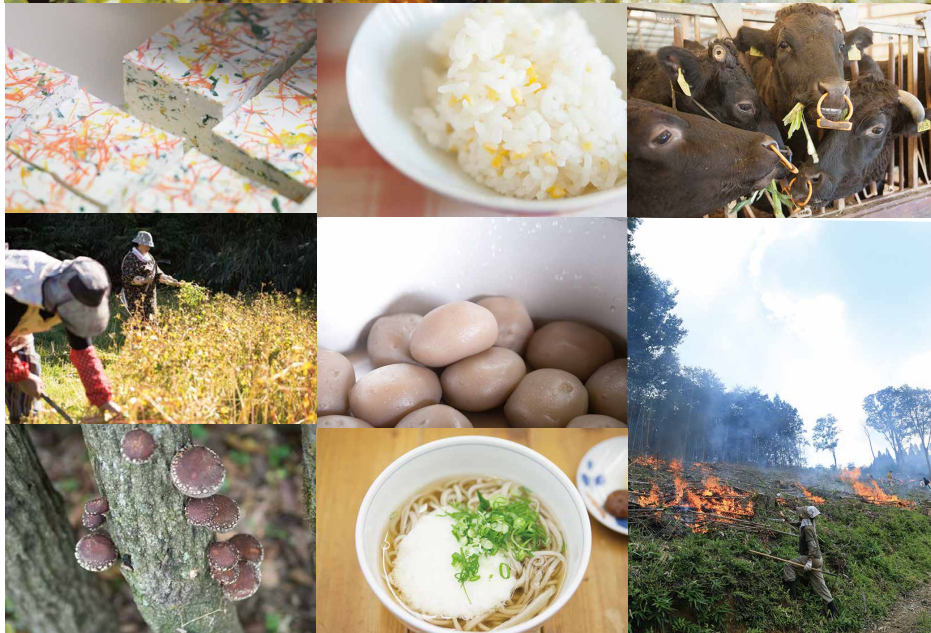
Shiiba’s delicacies include buckwheat noodles, corn, barnyard grass, millet, *Konnyaku*, vegetable infused *tofu*, traditional fermented soybeans, wild boar, pure honey, landlocked salmon, bamboo shoots, *shiitake* mushrooms, royal fern, Bracken, river moss, wormwood dumplings, *Akumaki*, pickled plums, and *Yuzu* pepper. All ingredients are taken from the mountains, fields, and rivers surrounding Shiiba . Each one contributes to life here in its own way.

In 2016 the *Takachihogo* and *Shiibayama* districts were registered as Globally Important Agricultural Heritage Systems. In this area, grains such as buckwheat, barnyard millets, and soybean are grown, grass-fed cows are raised, *shiitake* mushrooms are grown on a log, fish are caught, and wild boar are hunted with dogs. Rather than depleting the resources of the surrounding mountains, forests, and rivers, the locals continue to protect the natural environment by maintaining a healthy cycle of giving and taking from the land.

The phrase, “don’t take more than nature gives,” has been passed down for generations by hunters in Shiiba. When they catch a wild boar in the forest, they believe it is a blessing from the gods. Whatever they are given is plenty and there is no need for more. To eat is to take life from one thing in order to sustain another. In other words, one life is substituted for another. When you eat the food here in Shiiba, we believe you will sense the gravity of this reality.

Globally Important Agricultural Heritage Systems are built upon the same cycle of nature and life. Rather than importing expensive food from distant places, the people of Shiiba borrow a little bit of land from nature each year and divide up the blessings this land provides among themselves. This idea of not taking too much from nature is a sustainable, noble way of living that people all over the world would do well to embrace.

Getting to Shiiba takes a while, but it’s a place where the longer you stay, the more you’ll come to love it. Since it has earned the right to be named one of Japan’s three greatest secluded regions, you will undoubtedly be able to relax during your visit. Who knows, you might even discover yourself anew.





Shiiba's traditional dish "Nishime"

Stay Please contact by phone.

map	Kamishiiba Area	Tel
F-6 1	Nikaku	0982-67-2064
F-6 2	Okuhyuuga	0982-67-2454
F-6 3	Tsurutomiyasaki	0982-67-2320
F-6 4	Jinyanosato	0982-67-2836
F-6 5	Suzukake	0982-67-2166
F-6 6	Hietsukisou	0982-67-2125
F-6 7	Mitsukoshi	0982-67-2063
Okawachi Area		
E-8 8	Nakatake	0983-38-1112
Ohae Area		
E-5 9	Ryujinkan	0982-67-2261
E-5 10	Nasu	0982-67-2307
Fudono Area		
D-6 11	Fudonotei	0982-67-5311
Omukai Area		
D-5 12	Iwatomi	0982-67-5956
D-5 13	Imamura	0982-67-5315
D-5 14	Omae	0982-67-5959
D-5 15	Mataichi	0982-67-5621
D-5 16	Heike	0982-67-5657
D-5 17	Momijiya	0982-67-5633
D-5 18	Sakigake	0982-56-5533
C-5 19	Yakihata	0982-67-5516
D-5 20	Seiryuu	0982-67-5628
Kawanokuchi Area		
D-7 21	Farm inn Uemura	0982-67-2870
D-7 22	Farm inn Tanno	0982-67-2193
D-7 23	Farm inn Yamagakinose	0982-67-2901

Restaurant

map	Kamishiiba Area	Tel
F-6 1	Cafe Nikaku	0982-67-2064
F-6 24	Eating House Syoujikiya	0982-67-2062
F-6 2	Restaurant Okuhyuuga	0982-67-2454
F-6 7	Restaurant&Coffee Shop Mitsukoshi	0982-67-2063
F-6 25	Eating House Yamanaka	0982-67-2032
F-5 26	Roadside Restaurant Shiiba	0982-67-2223
F-6 27	Heikehonjin Restaurant	0982-67-3140
F-6 3	Tsurutomiyashiki	0982-67-2320
F-6 28	Shiibayamanokataribe	0982-67-2065
F-6 29	Restaurant Yokoidokoro Shiibaya	0982-67-2868

Souvenir shop

Kamishiiba Area		
F-6 30	ShiibaNobuo Liquor Shop	0982-67-2023
F-6 31	ShiibaMatsuno Liquor Shop	0982-67-2010
F-6 3	Tsurutomiyashiki Souvenir Shop	0982-67-2320
F-6 32	Nakazonohonten Bakery	0982-67-2020
F-6 28	Shiibayamanokataribe Souvenir Shop	0982-67-2065
F-6 33	Hashimoto Store	0982-67-2014
F-6 27	Heike Honjin Souvenir Shop	0982-67-3140
Fudono Area		
C-6 34	Moritaya Tofu	0982-67-5570



contact : Shiiba Village Tourism Association
〒883-1601 Miyazaki Prefecture Higashi Usuki-gun Shiiba village Shimo Fukura 1822 # 4
TEL.0982-67-3139 FAX.0982-68-7031
<http://www.shiibakanko.jp/>